

N.W. 1/4
SECTION 36, T.7N.,R.2W., S.L.B.&M.
IN TOWN OF PLEASANT VIEW & FARR WEST CITY

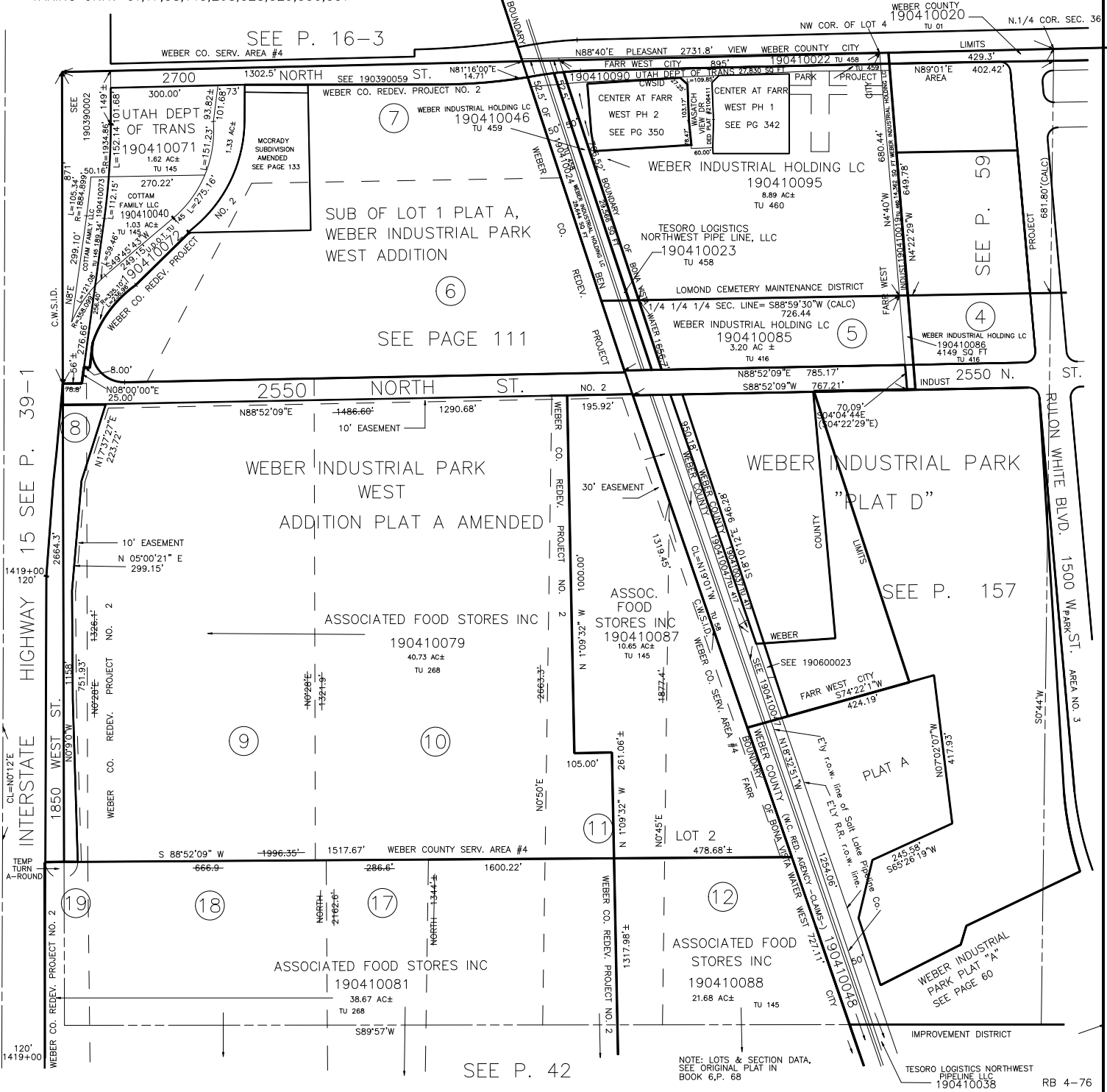
PREFIX: 19-041

TAXING UNIT: 01,17,58,145,268,328,329,330,331

SCALE 1" = 200'

SEE P. 16-3

WEBER COUNTY 190410020
TU 01
N.1/4 COR. SEC. 36



SEE P. 42

TESORO LOGISTICS NORTHWEST PIPELINE LLC 190410038
RB 4-76